



Power Supply Inspection System PW-800

*That Power Supply Inspection System
has returned to your hands!*



Ideal system for the switching power supply production line! High speed inspection with dedicated software.

The PW-800 automatic power supply inspection system is an all-in-one package that combines the know-how of automatic power supply inspection that we have cultivated over 40 years.

All the hardware necessary for power supply testing is built into the model-800E load/measurement unit, and by selecting the necessary input source (AC or DC power supply), the model-800E can be immediately put into the test line.

The PowerTestSite/PW-800 is the latest version of our automatic power supply test software, which has a proven track record of more than 20 years of support for Windows OS.

We provide a highly stable testing environment that is compatible with the latest OS, Windows 10, and uses readily available general-purpose PCs.

The existing PowerTestSite testing programs can be used without modification and it succeeds your past program assets without modification.

This is the latest version of the automatic power testing system, which is expected to be compatible with future OS updates and can be used with confidence.

POINT

1

**Isolated
5ch load
Max. 300W/load**

POINT

2

**5ch
Ripple & Noise
measurement**

POINT

3

**8ch
OV power supply
70V**
OV : Over Voltage

POINT

4

**16ch
DVM
Measurement**

POINT

5

**8ch
Di/Do
Input / Output**

POINT

6

**8ch
Contact output
(option)**

POINT

7

**3ch
Sequence
measurement
(option)**

Automatic Power Supply Inspection System **PW-800**

All power supply inspection is packaged.
PW-800 can be introduced into production lines immediately.

Automatic Power Supply Tester model-800E

General purpose measurement unit



OV power supply 8ch
Di/Do 8ch
DVM Measurement 16ch

DVM measurement, OV power supply, and digital I/O are standard*. It can be used for multi-point voltage measurement of SW power supply and control of test jig.

REMOTE BOX connector



SC-816A (model-800E accessory)

REMOTE BOX

Equipped with a connector for controlling Remote BOX SC-816A*1. By using the SC-816A remote box, you can start the inspection at hand and output the GO/NG signal from the REMOTE BOX connector.

5ch Ripple & Noise Measurement



Ripple measurement function for up to 100 VDC by multiplexer method (pulse width duty comparison method)

5ch Electronic load

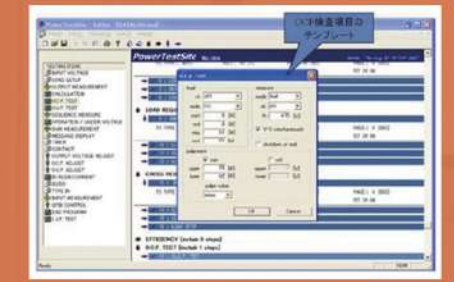


Isolated load block with up to 70V input, high-speed response and loading from around OV is possible.

ch	Power	Voltage	Current	Mode
ch1	300W	70V	50A	Constant current Constant resistance
ch2	100W		20A	
ch3	100W		20A	
ch4	50W		10A	
ch5	50W		10A	

Windows 10 compatible! PowerTestSite/PW-800

PowerTestSite, the automatic power supply software, has been upgraded to include more GP-1B control devices, support for increasingly sophisticated power supply test items, and license management via USB dongle, all while maintaining the same operation as before. Data created on the PTS-500 and PW-600 can be transferred without modification.



USB connector



ADRR switch
USB connector

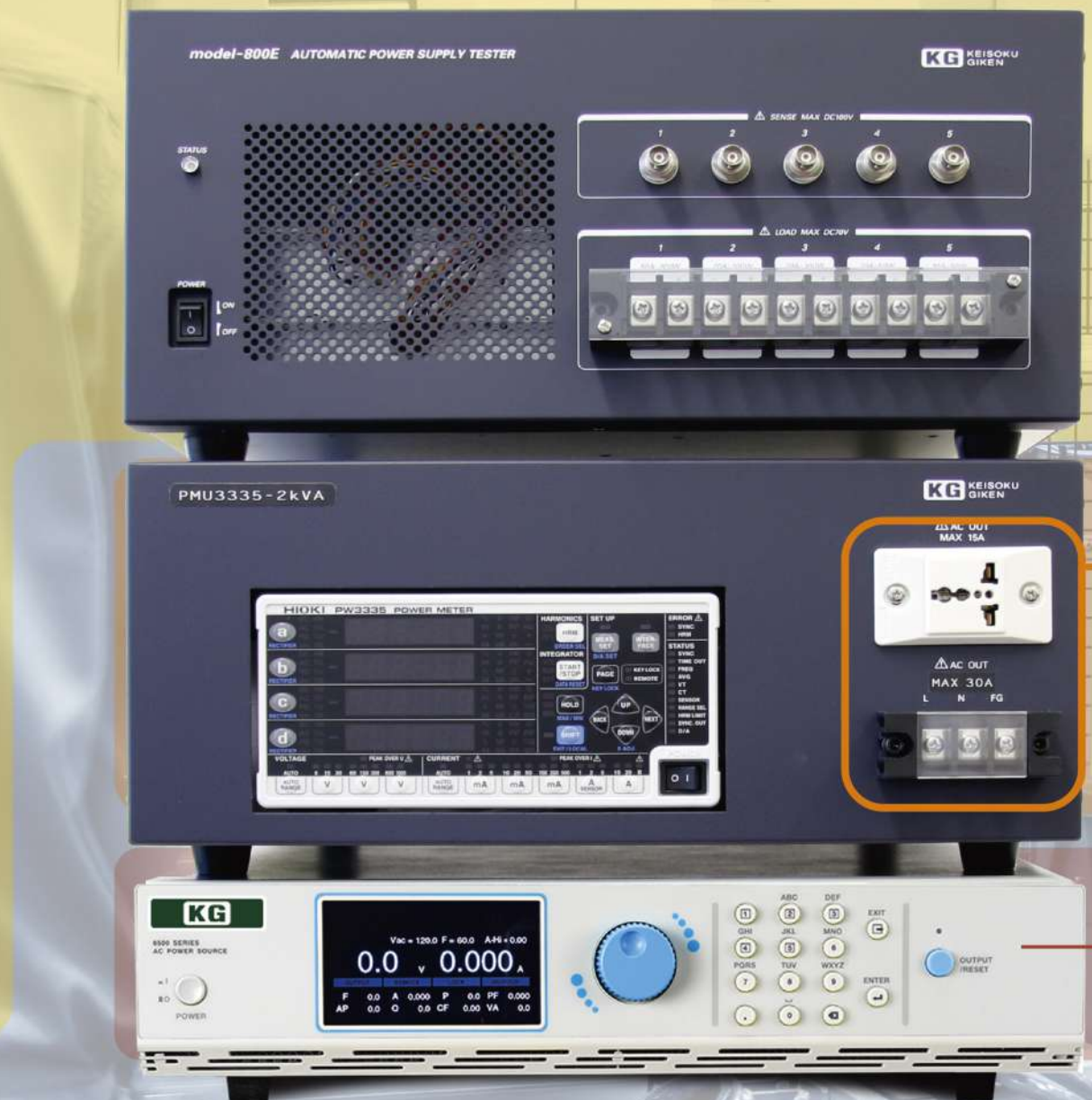
High speed control by adopting USB. Up to 4 units and 20 channels of load can be added by addressing.

CONTROL connector



CONTROL

Equipped with a control connector for DC source controller model-519A*1. You can choose from SA, 10A, 20A, 50A models.



General purpose slot for expansion

Up to three scanner slots can be added. Together with the standard general-purpose measurement section, the number of CHs for DVM measurement and digital I/O can be increased up to 32 CHs.



Model	Specifications
SC-830	Multiplexer for DVM measurement (8CH)
SC-840	Contact (relay contact) output (8CH)
SC-850	Photocoupler isolated digital I/O (8CH)
SC-860A	Sequence measurement (3CH)

Other functions

1. Various GP-1B control by USB-GPIB conversion cable
We can provide support for the measuring instruments we specify.
2. Additional load channels can be added
In addition to adding to model-BOOE, our electronic Load Station series can also be added. Supports up to 20 channels with GP-1B control.
3. Can be linked with safety testers (SE7400/SE7450 series)
Most tests of the SW power supply can be configured with the PW-800.



High-end multi-functional Electronic Load "Load Station Series"

Power Meter Unit

Power meter units are available for single phase, 2-wire input and three phase, 3-wire input wiring methods and capacities. The built-in power meter supports high-precision measurement as well as standby current measurement (up to 4kVA models) and inrush current measurement.

AC Connection Panel

A universal outlet and terminal block are provided for easy connection to OUT and jigs.

AC power supply (8500 ADV series) *2

For single phase, 500VA, 1.25kVA, 2kVA, 3kVA, 4kVA and 6kVA models are available, and for three phase, 3kVA and 6kVA models are available.

*1 : Pin assignments are fully compatible with model-600E. Can be connected to conventional jig without modification.

*2 : The power meter and AC power supply are controlled by GP-1B using a USB-GPIB conversion cable.

Specifications

Load and measuring unit(model-800E)					
	Power	Voltage	Current	Mode	Remarks
5 ch load	300W	70V	50A	Constant Current/ Constant Resistance	Available up to 600W loading by connecting multiple channels in parallel Minimum operating voltage can be set.
	100W		20A		
	100W		20A		
	50W		10A		
	50W		10A		
Output voltage	Measure method of 5ch switching ripple: Pulse width duty ratio comparison method			DC100V/AC2000mVpp Frequency characteristics 50MHz	
Overvoltage function test	External voltage applied method with 8 output multiplexer			1V ~ 70V/0.0A ~ 0.5A(with Over Current limiter)	
General purpose voltage measurement input	Digital voltmeter with 16-input multiplexer			DC100V 10mA	
Digital Input/ Output	Photo coupler 8-input, 8-output			Input: Photo coupler [1 ohm, 12V/10mA (Up to 16mA)] Output: Open collector [12V/10mA(Up to 24V/16mA)]	
General purpose slot	Up to 3 slots			Slot for additional SC-8xx scanner module	
Interface	USB2.0 and CONTROL I/F (only for model-519)			Conforming to USB2.0 (Full Speed)	
Range of input current/voltage	AC 85 - 264 V, 50 / 60 Hz (47 ~ 63Hz)			Single phase worldwide input	
Power consumption	200VA				
Dimensions	430(W) x 198.2(H) x 500(D) mm			Not including Protrusions	
Weight	16.5 kg				
Scanner module					
Model	Specification			Remarks	
SC-830	Multiplexer for DVM (8ch) measurement			Small signal magnet relay DC220V, AC250V, 10mA	
SC-840	Relay contact Output (8ch)			C-contact (transfer) DC30V 1A/ AC250V 1A	
SC-850	Photo coupler insulation digital Input/ Output (8ch)			Input: Photo coupler [1 ohm, 12V/10mA (Up to 16mA)] Output: Open collector [12V/10mA (Up to 24V/16mA)]	
SC-860A	Sequence measure (3ch)			Voltage input ± 200V Measuring time 0.1s ~ 10.0s(0.2msec)	
AC power source unit					
Model	Specification			Remarks	
8500 ADV series	Single phase 500VA - 6KVA			GP-IB option 03-85 is required separately	
EAC series	Three phase 3kVA - 6KVA			GP-IB option 1528 is required separately	
Power meter unit					
Model	Specification			Remarks	
PMU3335	Single phase 30A			Measure standby power and inrush current	
PMU3336	Single phase 65A/3-phase 3-wire 65A			Measure 2ch and inrush current	
DC power source unit					
Model	Specification			Remarks	
model-519A	Choose from rated current among 5A/10A/20A/50A			Genesys+(made by TDK lambda) is required separately	
USB-GPIB cable					
Model	Specification			Remarks	
USB-GPIB converter	USB2.0/IEEE488.2			Required due to make GP-IB equipment (for expansion) work	
Electric load for expansion					
Model	Specification			Remarks	
Load Station Series	120V/500V 300W or 1000W			GP-IB control	
PowerTestSite™ system requirements					
Model	Specification				
OS	Windows10(64 bit)				
CPU	Core™ i3 (3rd generation or better)				
Memory	4GB or more				
HDD free capacity	128GB or more				
USB	USB2.0 (use 2 port per one system)				
Model	IBM PC-AT compatible				

● The content of this catalog is generated based on the latest data as of Feb. 2021. ● Please consult us for the latest specification, price and availability of the product prior to ordering. ● All brand names, product names and company name are registered trademarks of their respective companies. ● Information in this document is subject to change without notice.



KEISOKU GIKEN Co., Ltd.
Power Electronics Div. Sales Dept.

Hiyoshi operation 4-11-1, Minamikase, Saiwai-ku, Kawasaki-City, Kanagawa,
212-0055 JAPAN
TEL +81-44-223-7950 FAX +81-44-223-7960

E-mail : PWsales@hq.keisoku.co.jp <https://www.keisoku.co.jp/pw/>